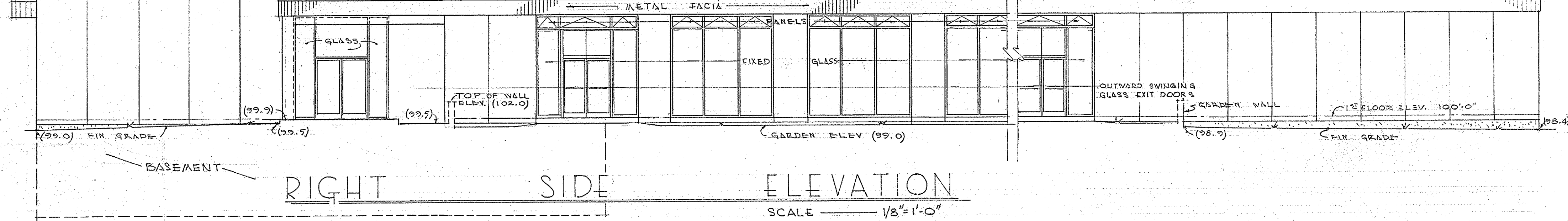


ELEVATION  
 (SHOWING SERVICE STAIR @ PENTHOUSE)



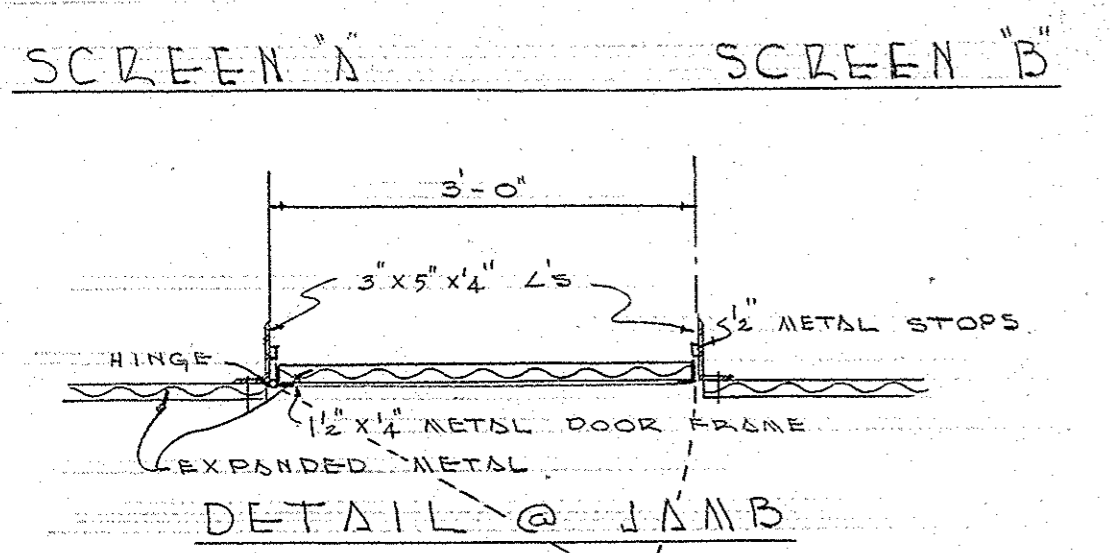
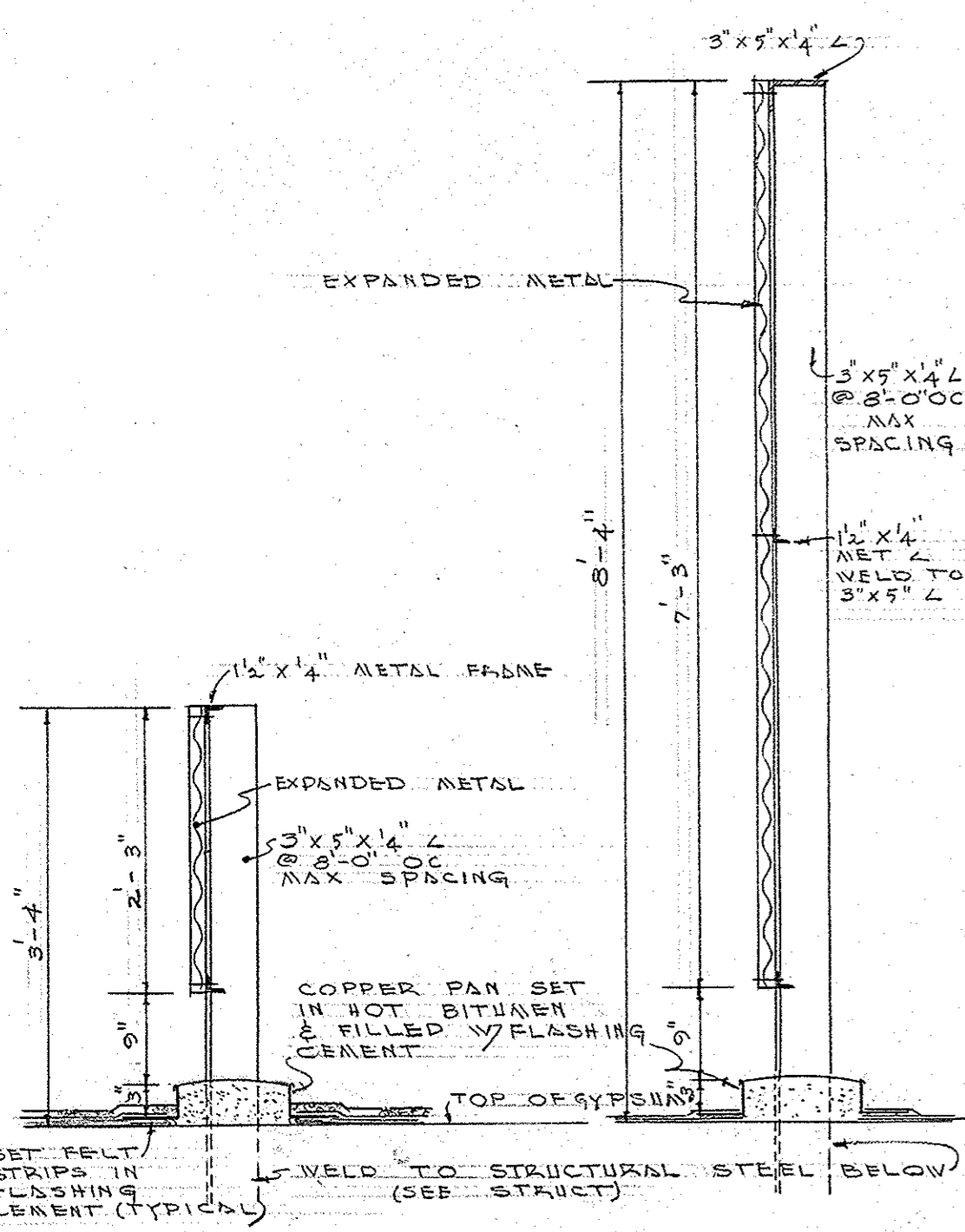
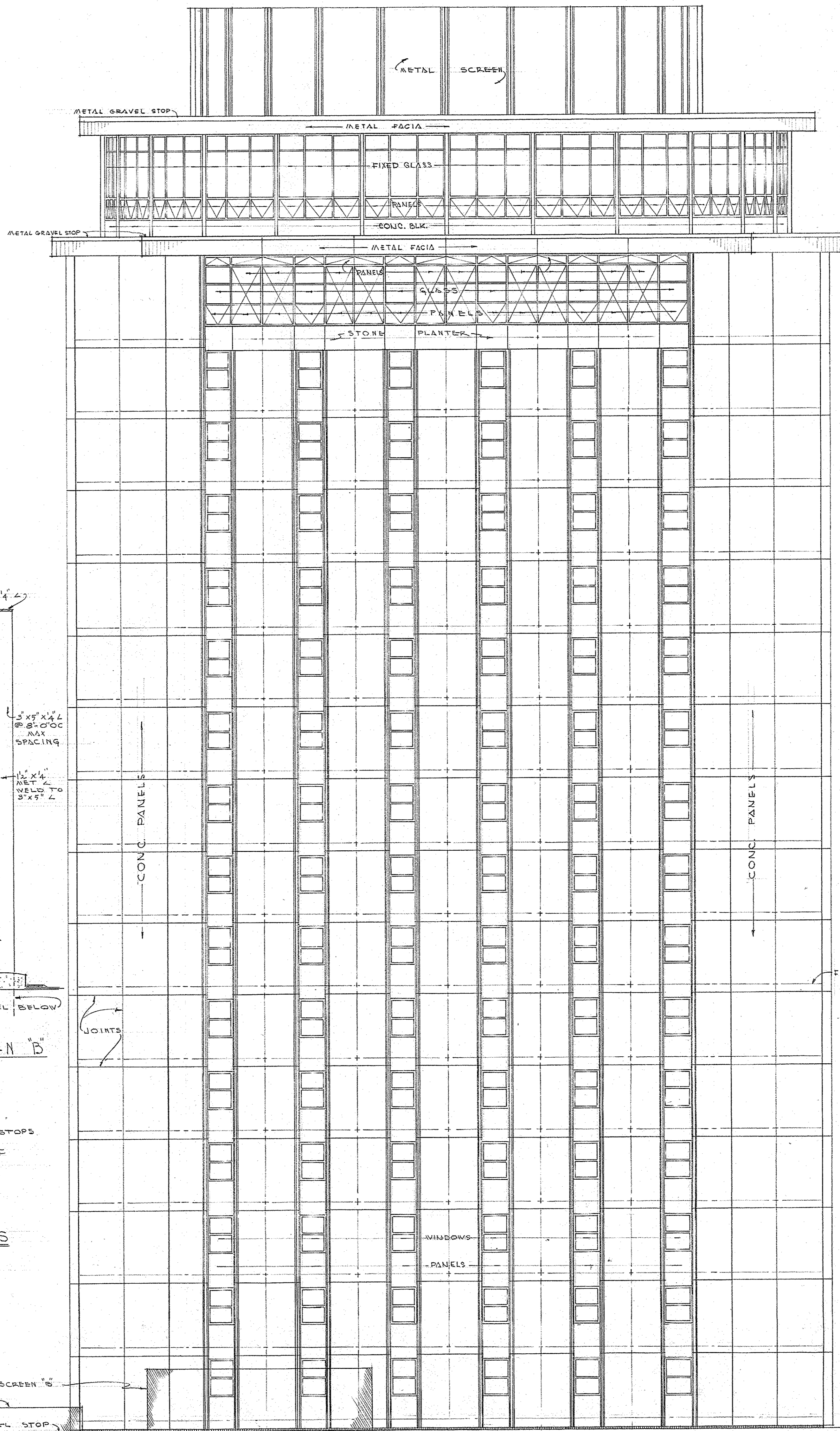
039-02-07-015

HHFA PROJECT NO. CH-SC-53(D)

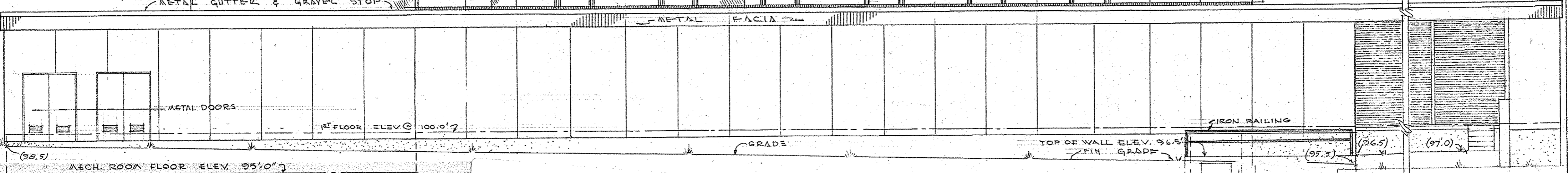
	THE UNIVERSITY OF SOUTH CAROLINA	
	CAPSTONE HOUSE	
	COLUMBIA	
	COMM. NO. C-367	DWG. NO. 9
DRY. G.T.H.	G. THOS. HARMON, FAIA	
DATE APRIL 1966	WM. J. KEENAN, AIA	
	ARCHITECTS	
	COLUMBIA, SOU. CAR.	

STAMP PRODUCTS INC. NEW BRUNSWICK, N.J.





**EQUIPMENT SCREENS**  
 3/4" = 1'-0"  
 (SEE SH. # 2 FOR LOCATIONS)



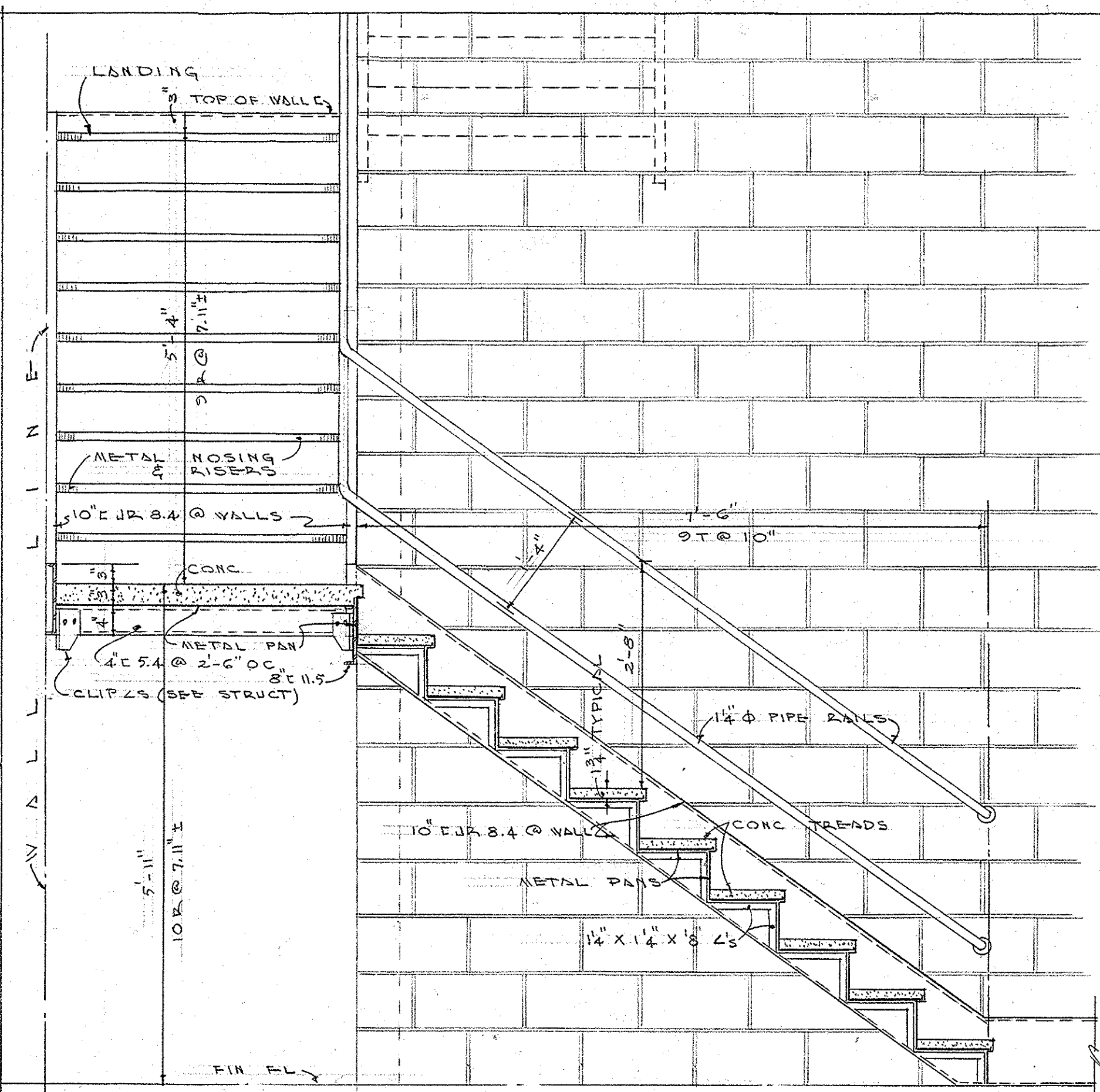
	THE UNIVERSITY OF SOUTH CAROLINA <b>CAPSTONE HOUSE</b> COLUMBIA		039-02-07-016
	COMM. NO. C-367	DWG. NO. <b>8</b>	REAR ELEVATION
	DRAWN J.S.	G. THOS. HARMON, FAIA WM. J. KEENAN, AIA ARCHITECTS COLUMBIA, SOU. CAR.	
	DATE APRIL 1966	HHEA PROJECT NO. CH-SC-53(D)	

REAR

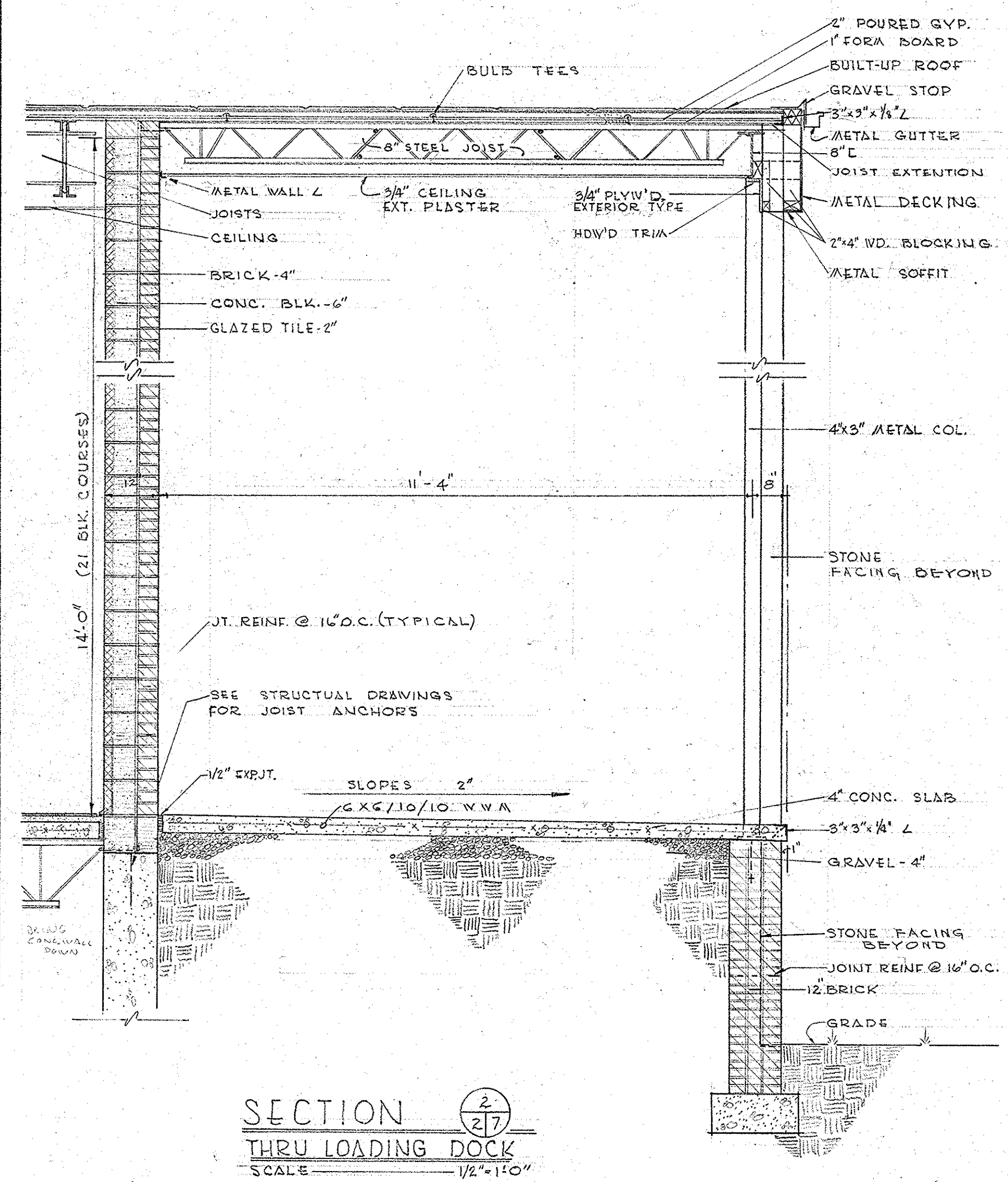
ELEVATION

SCALE 1/8" = 1'-0"

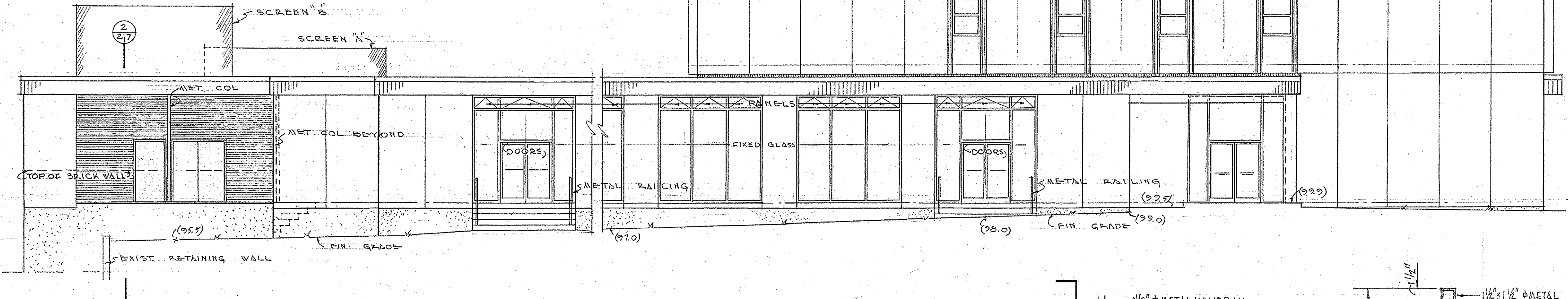
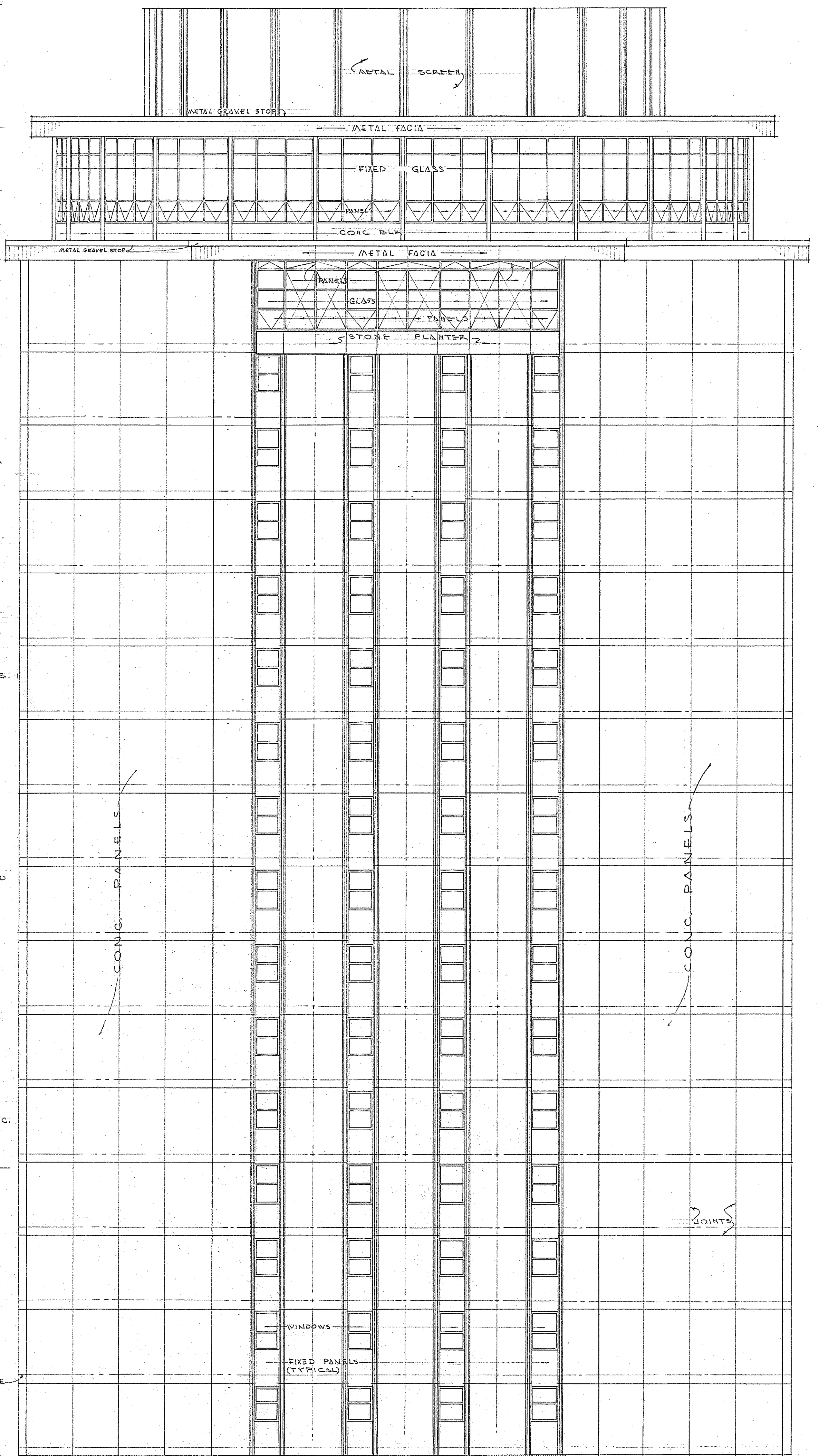




SECTION 1/1017  
SCALE 1/2" = 1'-0"



SECTION 2/217  
THRU LOADING DOCK  
SCALE 1/2" = 1'-0"



LEFT SIDE ELEVATION  
SCALE 1/8" = 1'-0"

039-02-07-017

HHFA PROJECT NO. CH-SC-53(D)

THE UNIVERSITY OF SOUTH CAROLINA  
**CAPSTONE HOUSE**  
COLUMBIA

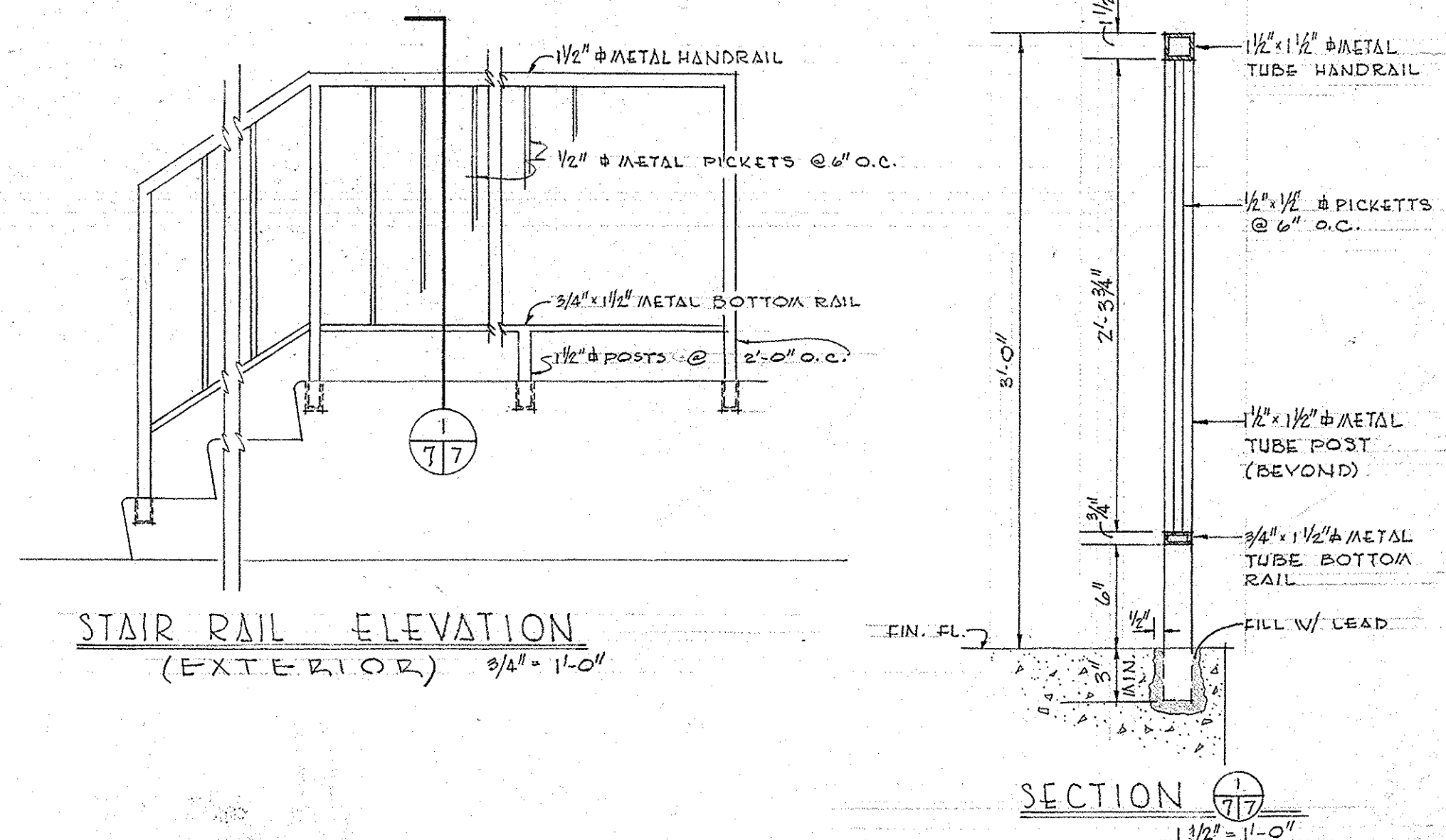
G. THOS. HARMON, FAIA  
WM. J. KEENAN, AIA  
ARCHITECTS  
COLUMBIA, SOU. CAR.

DWG. NO.  
**7**

COMM. NO.  
C-367  
DRAWN  
FUS  
DATE  
APRIL, 1966

LEFT ELEVATION & DETAILS

STAVAK PRODUCTIONS INC. FORT WASHINGTON, PA.

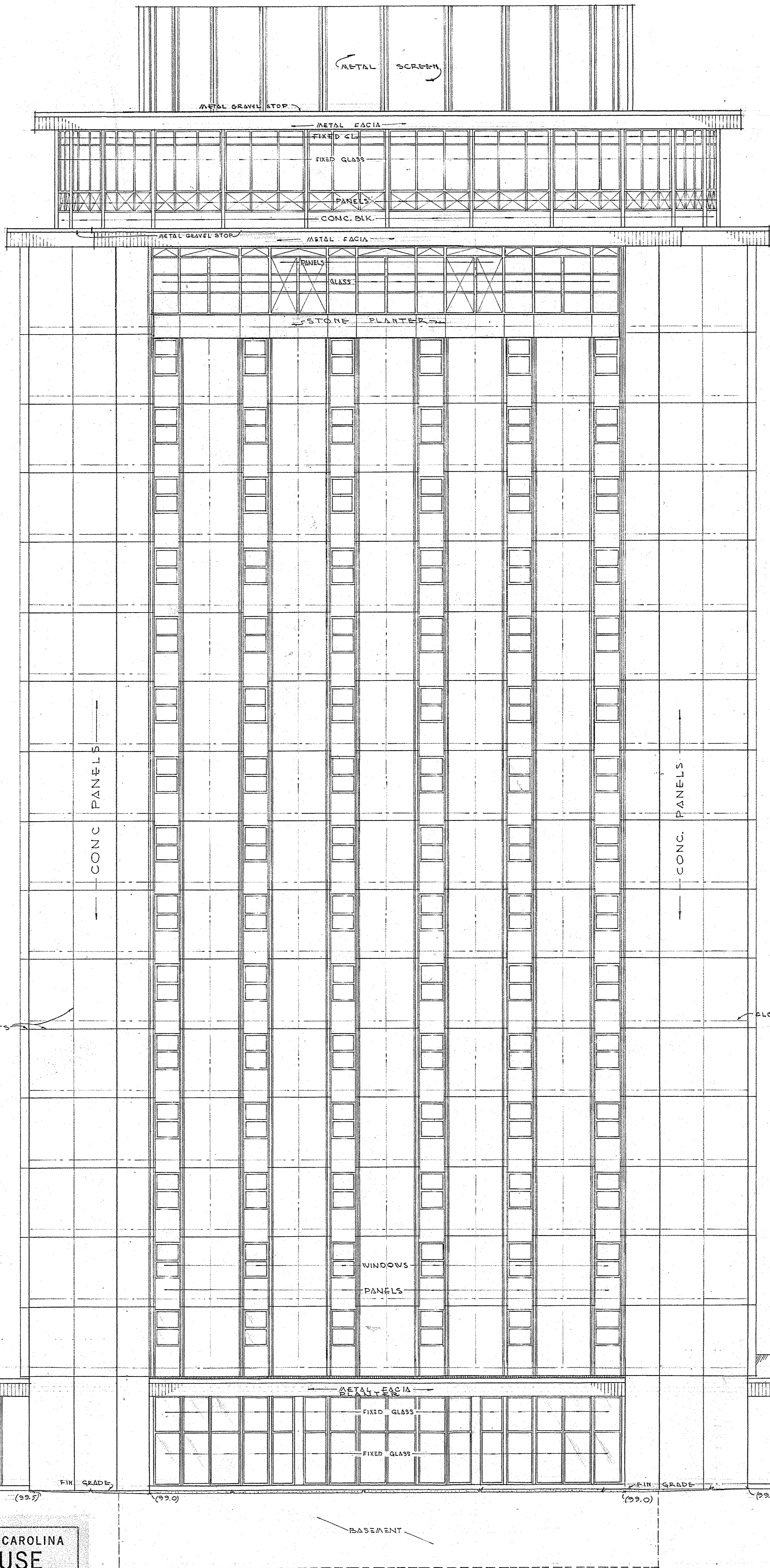


STAIR RAIL ELEVATION (EXTERIOR)  
SCALE 3/4" = 1'-0"

SECTION 1/17  
SCALE 1 1/2" = 1'-0"

*See notes on elevation*





039-02-07-018

HHFA PROJECT NO. CH-SC-53(D)

THE UNIVERSITY OF SOUTH CAROLINA  
**CAPSTONE HOUSE**  
 COLUMBIA



COMM. NO.  
C-367  
 DRAWN  
J.S.  
 DATE  
APRIL 1966

G. THOS. HARMON, FAIA  
 WM. J. KEENAN, AIA  
 ARCHITECTS  
 COLUMBIA, SOU. CAR.

DWG. NO.  
**6**

FRONT ELEVATION

FRONT

ELEVATION

SCALE 1/8" = 1'-0"